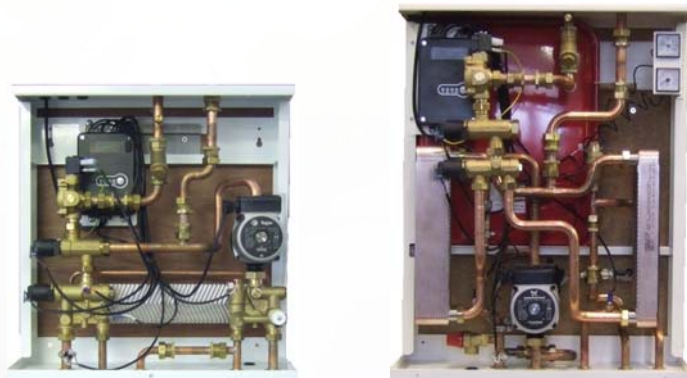


Teleheat Heat Interface Units (Heat Stations)

Single and Twin Plate Units. *Manufactured in the UK*



District heating Teleheat Heat Interface Units (Heat Station) for direct & indirect heating and instantaneous domestic hot water with thermostatic control, designed for wall-mounting.

- **Application**
- The Teleheat Heat Interface Units are a complete solution for hot water and space heating with optimal safety, efficient energy transfer, service-friendly construction and a compact design.
- **Hot water Capacities**
- 39kW, 45kW & 48kW
- **Heat Capacities**
- Up to 18kW
- **Single Plate Heat Exchanger Version**
- A single plate heat exchanger hydraulically separates the domestic hot water from the central primary circuit, whereas the heating circuit is supplied directly from the central primary circuit.
- **Twin Plate Heat Exchanger Version**
- Plate heat exchangers hydraulically separate the domestic hot water and the heating circuits from the central primary circuit.
- **Design Features**
- Accurate temperature monitoring for hot water and heating supply is managed by the integral electronic controller, temperature sensors, mixing valve and circulating pump.
- Hot Water Pre-heat function.
- Hot Water Priority.
- Gradual Warm Up feature for heating circuit.
- Pump and valve exercise program to reduce standstill seizure.
- Summer Winter Mode.
- LED information Matrix
- Remote BMS interfacing capability.
- **Options**
- M Bus connectable Heat Meter.
- M Bus connectable Water Meter
- Modulating Room Unit.
- Rear spacer mounting kit.

MHG Heating Ltd Unit 4 Epsom Downs Metro Centre, Waterfield, Tadworth, Surrey. KT20 5LR
Phone 08456 448802 Fax 08456 448803 Email info@mhgheating.co.uk web www.mhgheating.co.uk

Teleheat Heat Interface Units (Heat Stations)

Single and Twin Plate Units. *Manufactured in the UK*

	Single Plate Heat Exchanger Unit			Twin Plate Heat Exchanger unit		
Dimension						
Height (Inc Ball Valves)	514mm (639mm)			651mm (764mm)		
Width	493mm			513mm		
Depth (Inc Spacer Kit)	233mm (279mm)			264mm (308mm)		
Weight	25.9kg			32kg		
District Inlet	¾" BSP Male			¾" BSP Male		
District Outlet	¾" BSP Male			¾" BSP Male		
Heating Flow	¾" BSP Male			¾" BSP Male		
Heating Return	¾" BSP Male			¾" BSP Male		
Cold Water Inlet	½" BSP Male			½" BSP Male		
Cold Water Outlet	½" BSP Male			½" BSP Male		
Hot Water Outlet	½" BSP Male			½" BSP Male		
Max District Pressure	6Bar			6Bar		
Max Cold Water Pressure	10Bar			10Bar		
Max Heating Circuit Pressure	6Bar			3Bar		
Hot Water Specification	Type 14	Type 24	Type 40	Type 14	Type 24	Type 40
Capacity	39kW	45kW	48kW	39kW	45kW	48kW
Temperature Rise	40°C	40°C	40°C	40°C	40°C	40°C
Mass Flow Rate	14l/m	16l/m	18l/m	14l/m	16l/m	18l/m
District System Specification						
Inlet Temperature	80°C	80°C	80°C	80°C	80°C	80°C
Outlet Temperature	32°C	25°C	20°C	32°C	25°C	20°C
Mass Flow Rate	12l/m	12l/m	12l/m	12l/m	12l/m	12l/m
Hydraulic Resistance	11.2kPa	3.98kPa	1.76kPa	11.2kPa	3.98kPa	1.76kPa
Heating						
Capacity	18kW			18kW		18kW
District System Specification	~					
Inlet Temperature	~			80°C		80°C
Outlet Temperature	~			57°C		22°C
Mass Flow Rate	~			11.4l/m		4.7l/m
Hydraulic Resistance	~			3.51kPa		0.70kPa
Heating System Specification	~					
Inlet Temperature	~			70°C		40°C
Outlet Temperature	~			50°C		20°C
Mass Flow Rate	~			13.2l/m		13.2l/m
Max District Pressure Differential	0.4Bar			0.4Bar		
Hot Water Pre-Heating						
Hot Water Temp Range	30-60°C			30-60°C		
Heating Circuit Temp Range	30-80°C			30-80°C		
Underfloor Heating Temp Range	30-45°C			30-45°C		
Integral Pump	Grundfos 15/60			Grundfos 15/60		

MHG Heating Ltd Unit 4 Epsom Downs Metro Centre, Waterfield, Tadworth, Surrey. KT20 5LR
 Phone 08456 448802 Fax 08456 448803 Email info@mhgheating.co.uk web www.mhgheating.co.uk

