



## **MD 120 Commissioning Guide.**

This sheet is intended as a quick reference guide and should be read in conjunction with the installation guide for the boiler supplied by MHG Heating Ltd.

The boiler must be placed in the commissioning mode prior to carrying out any adjustments to the combustion figures.

The chimney sweep button on the display fascia panel at the top of the boiler, corresponding to the module to be commissioned should be pressed once, which will change the green display to “L” (Low fire) Pressing the button again will change the display to “H” (High fire). Pressing the button again will return the module to the automatic control mode.

The commissioning mode will control the output of the module for a period of 10 minutes.

Once the analyzer has been inserted into the flue tube at the rear of the unit via the capped hole or the heat exchanger via the hole in the top right of the unit, adjustments can be carried out.

(The flue gas which is sampled via the hole in the heat exchanger would not have passed through the secondary heat exchanger, therefore the flue temperature and efficiency reading will be a true indication of the boilers combustion efficiency.)

It is advisable to check the combustion figures on Low and High fire prior to carrying out any adjustments.

Adjusting the high fire has a marked effect on the low fire figures.  
Where as adjusting the low fire has little effect on the high fire figures.

The Low fire adjustment is carried out via the Cross Headed governor accessed via the large Slotted Head Screw in the center of the gas valve (1)

The High fire adjustment is carried out via the small Slotted Head Screw recessed adjacent to the unused pilot adjuster screw.(2)

The high fire adjustment is a Gate type restricter.

Therefore turning the screw clockwise will close the gate and thus restrict the quantity of gas passing through to the burner.

The figures which should be achieved are:

LOW FIRE

9.5 %  
11.5 %

CO<sub>2</sub> Natural Gas  
CO<sub>2</sub> LPG

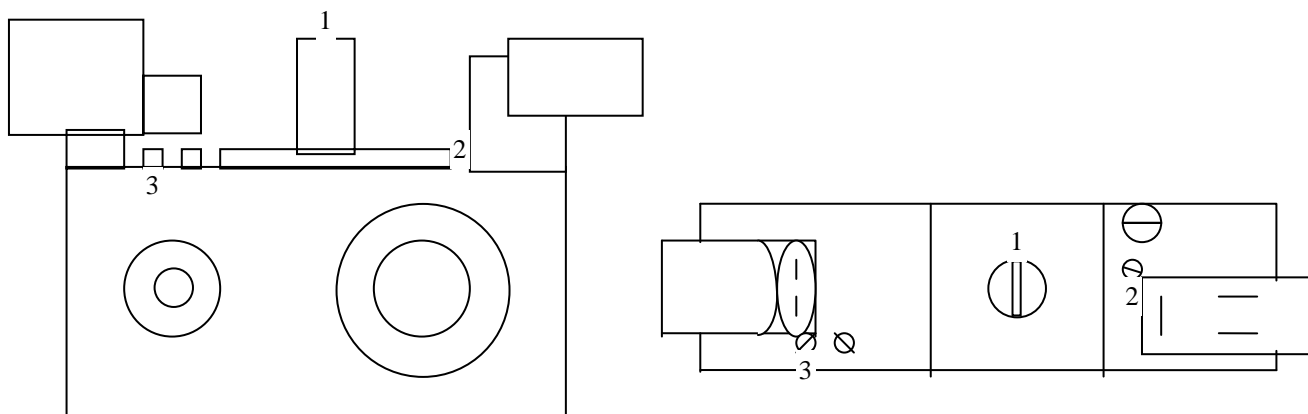
HIGH FIRE

9 %  
11 %

CO<sub>2</sub> Natural Gas  
CO<sub>2</sub> LPG

Once the correct figures have been achieved the test button on the control fascia should be pressed to allow the module to pass through an ignition cycle.

The unit should then be placed in the commissioning mode once again, whilst the figures are rechecked and where necessary readjusted.



**MD 120 Gas valve**